

Stepping Out in Rockingham

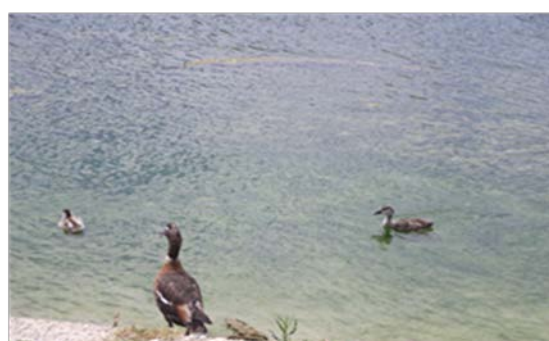
City Park Walk



City Park Walk

Distance: 1 km / 1250 steps
Time: 10 minutes
Start: Westralia Gardens
Surface: Concrete

Access to City Park is via Read St or Chalgrove Avenue, then into Success Drive, right into Westralia Gardens where you'll find parking. Join the red concrete footpath, near the swings and mosaic mound. Head clockwise around the lake, following the footpath pass the ducks and other bird life. There are three outdoor fitness stations along the route if you wish to do further physical activity. The footpath meanders around the picturesque lake, taking you past the Autumn Centre, around the circle of tree-lined park area and back to the start of the 1km City Park Walk. End of destination facilities include toilets, picnic and children's playground with bench seats located at various spots around the lake. A very picturesque 1 kilometre circuit that can be completed as many times as you like.



MAP 9

