

# FOGO

Food Organics and Garden Organics



# Why FOGO?

Did you know that organic waste makes up almost 50% of what we put into our red bin?

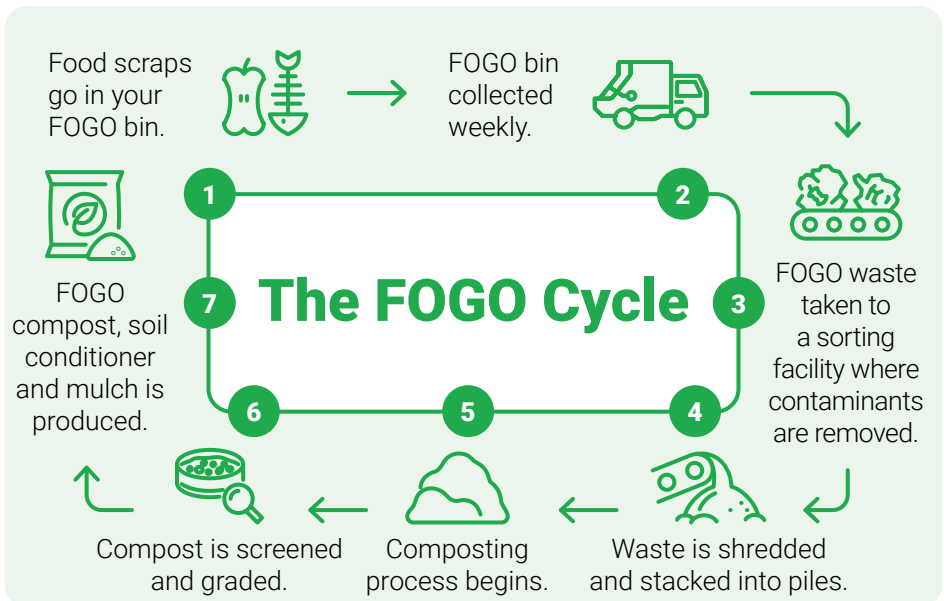
FOGO diverts valuable materials, such as organic waste from landfill, and repurposes it into compost, soil conditioner and mulch.



Meal planning, buying only what you need, and using leftovers can help reduce the amount of food waste ending up in your kerbside bins. But for unavoidable food waste, placing them in the FOGO bin alongside garden waste ensures they are diverted from landfill.



Correct use of the three-bin system is a simple yet powerful step to cut down on landfill waste, look after our environment and live more sustainably.

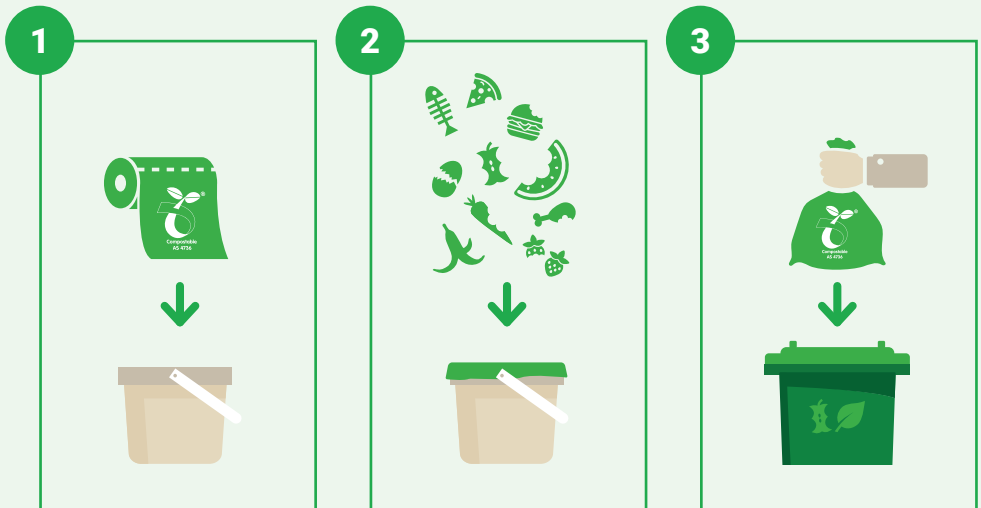


# Green-lidded FOGO Bin Collected Weekly

## How to use your kitchen caddy

Under the FOGO service, food scraps are separated from your general waste and put into the green-lidded FOGO bin.

We have provided you with a kitchen caddy and two rolls of certified compostable liners to help you sort your waste at the source, the kitchen. Here's how it works:



Line the caddy with a compostable liner.

Add your food scraps.

When your caddy is full, empty it into your green-lidded FOGO bin.

Food scraps can also be placed loosely in the bin.

Each household is entitled to two rolls of 75 certified compostable caddy liners annually.

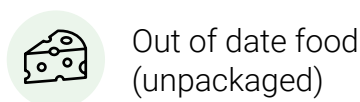
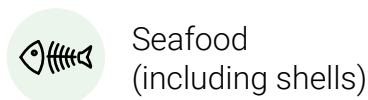
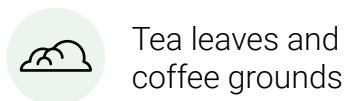
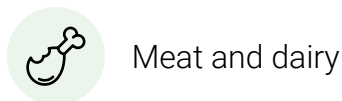
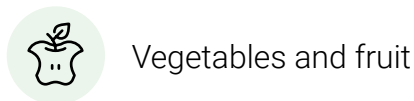


# Green-lidded FOGO Bin Collected Weekly

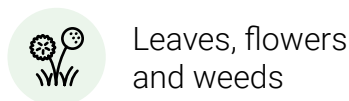
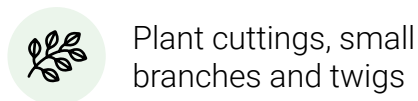
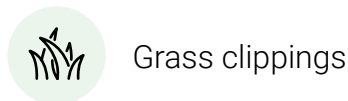
  
"If it didn't  
live or grow,  
it's not  
FOGO"

## What can I put in my green-lidded FOGO bin?

### Food organics



### Garden organics



### Compostable caddy liners

Look out for the Australian Standard Compostable symbols (AS5810, AS4736) to ensure your liners are FOGO friendly.



## Here's some tips to keep your kitchen caddy and green-lidded bin free from pests and smells:



- ▶ Empty your caddy every two to three days.



- ▶ Wash your kitchen caddy out after each use and hose your green-lidded bin out regularly.



- ▶ Store your green-lidded bin in the shade.



- ▶ Layer scraps with used coffee grounds, leaves and grass clippings.



- ▶ Use a natural deodoriser like bicarb soda.



- ▶ Keep the lid closed.



- ▶ Freeze meat, bones, and dairy food waste until collection day.

## What's even better than FOGO? Reducing your food waste altogether. Here's some tips to waste less:



- ▶ Plan your meals.



- ▶ Keep an eye on the best before dates and use food before it spoils.



- ▶ Write a shopping list.



- ▶ Meal prep and portion your meals.



- ▶ Eat up all your leftovers or freeze them for later.

# Recycling Bin Collected Fortnightly

What can I put in my recycling bin?



- ✓ Paper
- ✓ Cardboard
- ✓ Cans
- ✓ Plastic (bottles and containers)
- ✓ Glass (bottles and jars)

Items must be loose.

Containers rinsed and lids off.

Scan the QR code or head to [rockingham.wa.gov.au/nearme](https://rockingham.wa.gov.au/nearme) to check your collection days.



# General Waste Bin Collected Fortnightly

What can I put in my general waste bin?

- ✓ Nappies
- ✓ Hygiene and sanitary products
- ✓ Damaged clothing and textiles
- ✓ Disposable coffee cups and lids
- ✓ Polystyrene
- ✓ Pet poo
- ✓ Soft plastics





Now that we have moved to FOGO, every week you will put out either your green and red bins or your green and yellow bins.

Your schedule depends on where you live, so please check which bins you need to put out by visiting [rockingham.wa.gov.au/nearme](https://rockingham.wa.gov.au/nearme)

Once you know, you know.



FOGO and General Waste



FOGO and Recycling

## Be a GREAT sort, make landfill the last resort.

**Gift stuff**  
to charity,  
swap or sell.

**Recycle just these five**  
paper, cardboard, cans,  
plastic and glass.

**Avoid excess  
packaging**  
and purchases.

**Earth cycle**  
food scraps and garden  
waste into compost.

**Take to drop-offs**  
batteries, light globes,  
e-waste and chemicals.



For more information on FOGO  
visit [rockingham.wa.gov.au/FOGO](http://rockingham.wa.gov.au/FOGO)  
or scan the QR code.



Stay up to date on all things environment, sustainability, waste and FOGO by signing up to the City's GREEN e-newsletter. Visit the City's website, search for newsletters, then hit the subscribe button and select 'GREEN'.

