

Community Education

Verge Compliance



The verge is the shared area between your property and the road. We've enclosed some important information to help you keep your verge safe, environmentally and service friendly.



rockingham.wa.gov.au

Verges are a shared area where utility providers' pipes, wires and cables are installed to service each property with electricity, telephone and internet, gas, water and sewerage.

Before you do any type of excavation on your verge please do a free online 'Before You Dig Australia' check to avoid personal injury or damage to services.





**You can cover your verge with lawn,
plant it with low growing shrubs that will
stay shorter than half a metre, or spread
organic mulch all over it.**



**Please keep
your verge
tidy and
the weeds
under control.**





— 50% or 10m² — | - - - - - |

You will need to have a crossover built that connects your driveway to the road. In addition to this you may have up to 50% or 10 square metres, whichever is larger, of additional acceptable hard surface material, such as concrete or paving. The City's website provides information and specifications for crossovers, the approvals required and available subsidies.





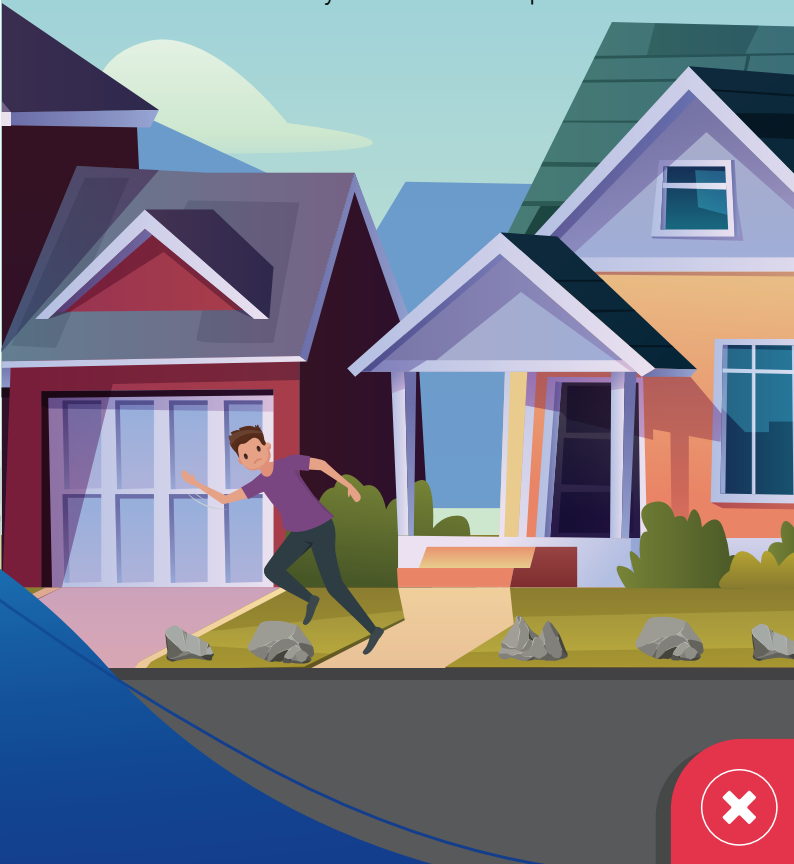
Some materials are unsuitable for verges. Gravel and crushed brick (also known as inorganic mulches) are unstable and may spill onto the road causing injury to pedestrians and hazards to road users, such as chipped windscreens.

Please use organic (plant-based) mulches only, and keep the material fully contained within your verge area.



Verges are also used for pedestrian access.

Please keep your verge clear of objects that may be a trip hazard such as rocks, garden edging and above ground sprinklers. Protruding objects and unlevel surfaces may cause harm to pedestrians.





Street trees create many benefits for the community and the environment. The City is responsible for planting and maintaining all street trees.

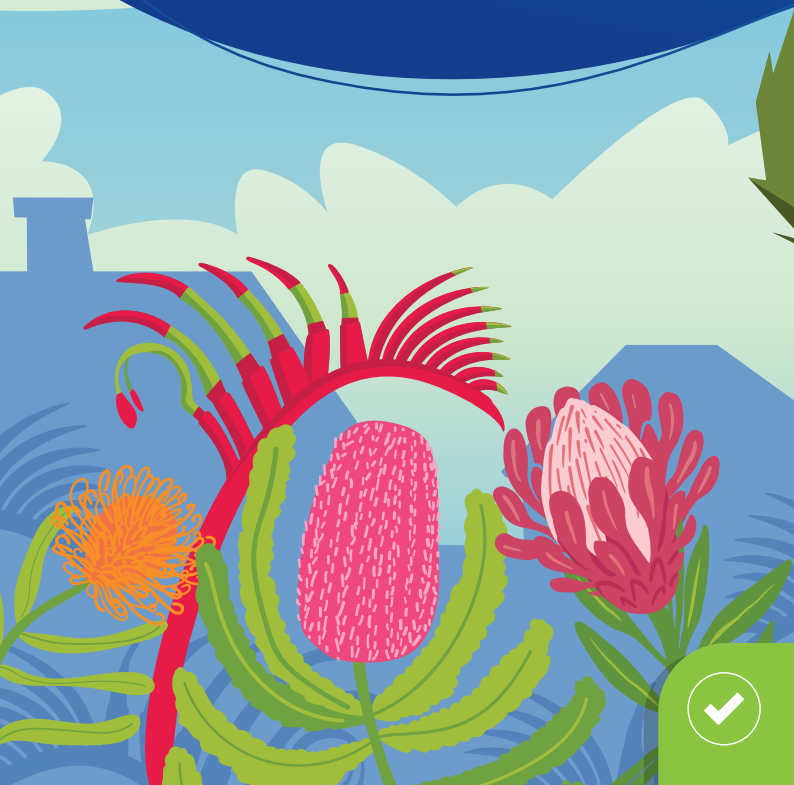
Visit rockingham.wa.gov.au/trees for more information, and to find out more about getting a free street tree for your verge.

Removing street trees from the verge is not permitted.



Waterwise gardens create attractive, low maintenance and low water use verges that can also create a cooling effect in the warmer weather.

You may even be eligible for free mulch, a subsidy and/or free plants to help you create a stunning verge that requires little ongoing work.





For more information about verge treatments, maintenance, crossovers and waterwise gardens, check out the 'Verges and Gardens' page on the City's website by visiting

rockingham.wa.gov.au/vergesandgardens or

contact us on **9528 0333** or

customer@rockingham.wa.gov.au