

# Get Pet Ready



## Preparations around your property

Take the following steps to improve the protection of your assets and animals:

- ensure your animals always have adequate water to last at least five days
- purchase emergency fodder and food supplies and storing in a safe place
- mark out gates, food and water location on a map of your property in case someone has to move animals for you
- remove flammable items around where animals are kept and removing any rugs or halters from horses in the event of a bushfire
- identify areas in the home where smaller companion animals would be able to take shelter
- identify safety equipment, installing sprinkler systems and alternative water supply
- keep the area clear around your property including installing and maintaining adequate firebreaks.

## Animal Identification

By taking the following steps you improve your chances of being reunited with your pets and animals should you be separated in an emergency:

- ensure your animal identification and registrations are up to date, including with your vet and local government
- have recent photos of your animals, which can assist with identification
- keep animal vaccinations up to date
- microchip and register your horses on a licensed registry.



## Keep informed

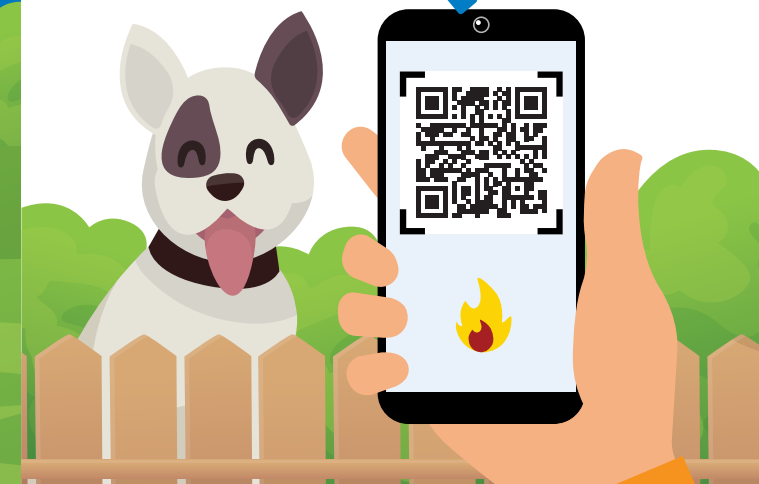


If an emergency warning is current or extreme weather is forecast, consider moving stock and animals to a safer place ahead of time in case you are unable to return.

Official emergency advice can be found at **[emergency.wa.gov.au](https://www.emergency.wa.gov.au)**

State Emergency Planning now includes animals in emergencies. Check the City's website for the Animal Welfare in Emergencies Plan and all emergency management information at: **[rockingham.wa.gov.au/emergencies](https://www.rockingham.wa.gov.au/emergencies)**

Download the DFES My bushfire plan app (for android or iphone users) which will guide you through creating a plan, with handy checklists and reminders. Scan the QR code below with your camera.



[rockingham.wa.gov.au](https://www.rockingham.wa.gov.au)



All owners have a duty of care to provide adequate food, water, shelter, and treatment for injury or disease of their animals.

By developing an emergency plan that includes your pets, you can keep them safe and make sure you have everything ready in the event you need to leave quickly.

Often people don't want to evacuate without their animals, and may be faced with difficult and stressful decisions if unprepared in an emergency.

## Take Five

1

An emergency plan

2

An emergency kit

3

Preparing your property

4

Evacuation and relocation (safer areas)

5

Animal identification

## Emergency Plan

### Knowing where to go

Ensure you research and note down suitable places (shelters, family members, boarding kennels) to evacuate your pets to in an emergency. Please note designated evacuation centres only accept assistance dogs.

### Practice your plan by:

moving animals and making them familiar with transport and containment such as floats and crates

assign roles to family members - who finds the pets, who grabs the emergency kit etc.

 understand that in an emergency, pets may become stressed or scared, and hide

practice your evacuation plan to see how long it will take to get to your evacuation point.

## Emergency Kit



leash or carrier



at least two to three days of food and water



any medication



pet blankets and toys



relevant animal identification, certificates of vaccination, vet details etc.



dog waste bags or litter tray and scoop



halters and leads



first aid kit



contact details for owners and an additional emergency contact



a list of nearby pet boarding facilities



a list of suitable accommodation options who can house pets and animals.

