



Copyright "This document shall remain the property of Development Engineering Consultants Pty. Ltd. The document may only be used for the purpose for which it was commissioned & in accordance with the terms of engagement for the commission. Unauthorised use of this document in any way is prohibited."							
No.	DATE	BY	ISSUED FOR APPROVAL	SRA			
A	29/06/12	JTH	ISSUED FOR APPROVAL				
				REVISION			

CLIENT:
CARCIONE NOMINEES PTY LTD



**DEVELOPMENT
ENGINEERING
CONSULTANTS**

SUITE 3, 123A COLIN ST,
WEST PERTH, 6005
WESTERN AUSTRALIA
Ph: (08) 9481 1900
Fax: (08) 9481 1700

PROJECT:
**FIFTY ROAD, EIGHTY ROAD
BALDIVIS**
W.A.P.C. No. -

DRAWING:
**EARTHWORKS
PRELIMINARY LOT LEVELS
SHEET 1 OF 4**
CAD DRAWING DO NOT MANUALLY ALTER

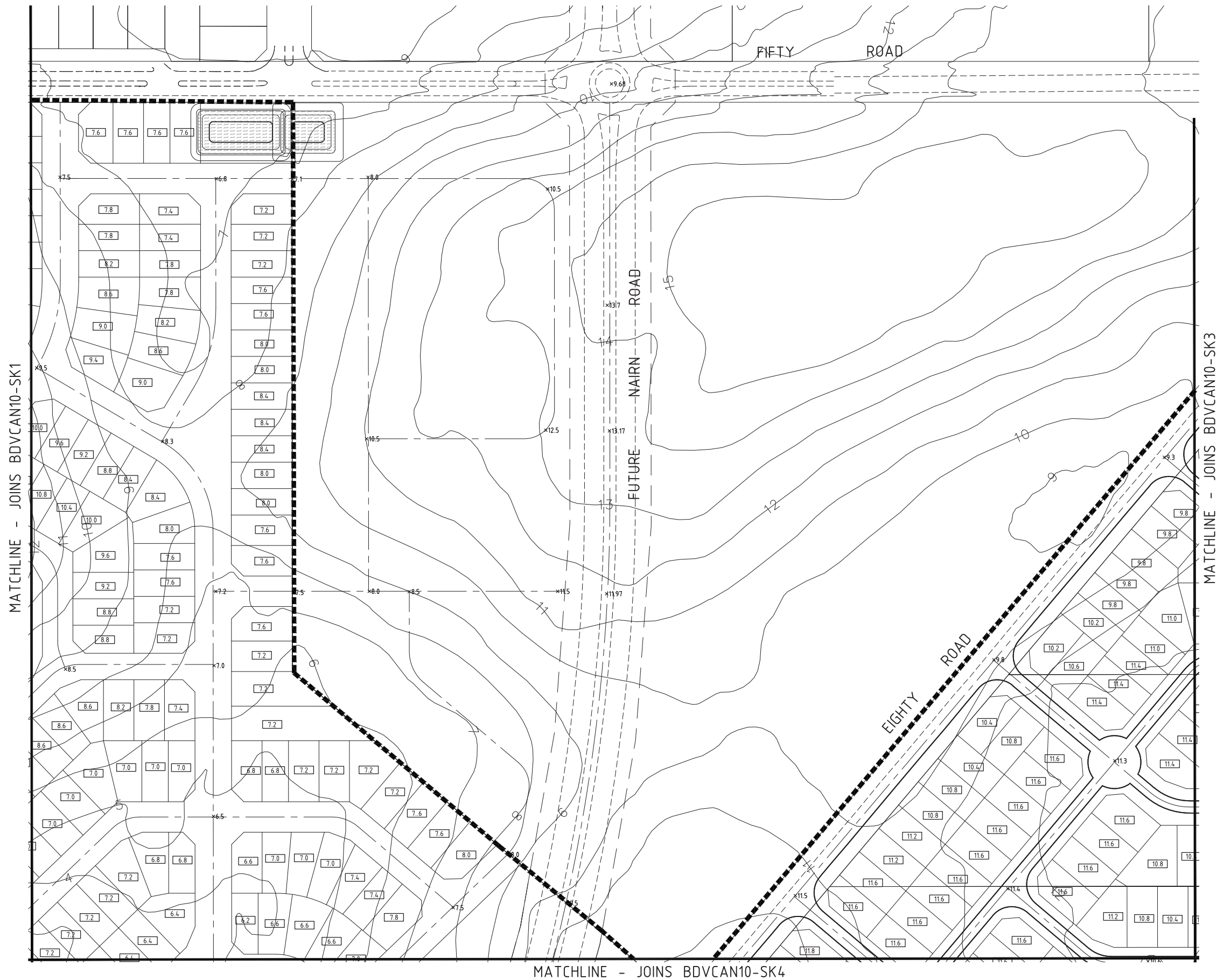
SCALE 1:1000	DRAWN JTH	CHECK SRA	REV No. A
DATE 29/06/12	DESIGNED JTH	APPROVED SRA	
PROJECT NUMBER BDVCAN10 SK1			
S:\CAN\BDVCAN10\DRAWINGS\BDVCAN10_SK1.dwg 29/06/2012			



MATCHLINE - JOINS BDVCAN10-SK2

MATCHLINE - JOINS BDVCAN10-SK4

STRUCTURE PLAN BOUNDARY



----- STRUCTURE PLAN BOUNDARY

1:1000
(A1) 0 10m 20 30 40 50 60 70 80 90 100 110 120 130 140 150

Copyright

"This document shall remain the property of Development Engineering Consultants Pty. Ltd. The document may only be used for the purpose for which it was commissioned & in accordance with the terms of engagement for the commission. Unauthorised use of this document in any way is prohibited."

No.	DATE	BY	REVISION	SRA
A	29/06/12	JTH	ISSUED FOR APPROVAL	

CLIENT:

CARCIONE NOMINEES PTY LTD



DEVELOPMENT
ENGINEERING
CONSULTANTS

SUITE 3, 123A COLIN ST,
WEST PERTH, 6005
WESTERN AUSTRALIA
Ph: (08) 9481 1900
Fax: (08) 9481 1700

PROJECT:

FIFTY ROAD, EIGHTY ROAD
BALDIVIS

W.A.P.C. No. -

DRAWING:

EARTHWORKS
PRELIMINARY LOT LEVELS
SHEET 2 OF 4
CAD DRAWING DO NOT MANUALLY ALTER

SCALE 1:1000	DRAWN JTH	CHECK SRA	REV. No. A
DATE 29/06/12	DESIGNED JTH	APPROVED SRA	
PROJECT NUMBER BDVCAN10 SK2			
S:\CAN\BDVCAN10\DRAWINGS\BDVCAN10_SK2.dwg 29/06/2012			

