



APPENDIX D

SUPPLEMENTARY TREE INFORMATION



18 May 2012

Our Ref: J110200-001-KLG

Coordinator- Sustainability & Environment
City of Rockingham
Civic Boulevard
Rockingham, WA, 6168
ATTENTION: Fiona Pond

Dear Fiona,

SUBJECT : LOT 1507 SIXTY EIGHT ROAD, BALDIVIS (PARKLAND HEIGHTS) - POTENTIAL BLACK COCKATOO HABITAT TREES

ENV Australia Pty Ltd (ENV) undertook a Black Cockatoo Site Assessment on the 6th of October 2010 for Lot 1507 Sixty Eight Road, Baldivis, Western Australia ("Parkland Heights"), herein referred to as the "project area". The survey was undertaken as the *Environment Protection and Biodiversity Conservation Act 1999* (EPBC) Protected Matters Search (2010) identified the Forest Red-tailed Black-Cockatoo (*Calyptrorhynchus banksia naso*), Baudin's Black Cockatoo (*Calyptrorhynchus baudinii*) and Carnaby's Black Cockatoo (*Calyptrorhynchus latirostris*) as species of National Environmental Significance potentially occurring within the Parkland Heights project area.

During this site assessment, four Jarrah (*Eucalyptus marginata*) trees were identified as being potential foraging and/or future breeding trees for the Black Cockatoo species. To be considered as potential future breeding trees, the tree trunk must be at least 500mm diameter at breast height (DBH). During this 2010 survey, the GPS points of these potential Black Cockatoo potential habitat trees were not taken.

Following a request from the City of Rockingham, ENV returned to the project area on the 19th of April 2012 to locate these Jarrah trees. During this second visit to the project area, three Jarrah trees and one Marri (*Corymbia calophylla*) were identified and these were located within the Sixty Eight Road reserve. The location (GPS coordinates) and details about these trees are provided in Table 1.

Level 1, 503 Murray Street PERTH WA 6000
PO Box 7480, Cloisters Square PERTH WA 6850

	telephone	{08} 9214 6100
email	env@env.net.au	facsimile {08} 9226 4109
web	www.env.net.au	ENV•Australia ABN 72 091 839 520

Table 1. Potential Black Cockatoo Habitat (Foraging and Breeding) Trees Recorded at Parkland Heights during 2010 Survey

Species Name	Common Name	*Easting	Northing	DBH (mm)	Tree Height (m)	Foraging Evidence	Size of Hollows
<i>Eucalyptus marginata</i>	Jarraah	387591	6418542	1000	20	No	Nil
<i>Eucalyptus marginata</i>	Jarraah	387483	6418502	900	15	No	Nil
<i>Eucalyptus marginata</i>	Jarraah	387372	6418413	700	15	No	Nil
<i>Corymbia calophylla</i>	Marri	387701	6418564	700	19	No	Nil

Note - Coordinates based on Australian Geocentric 1994 (GDA94) Zone 50H

The location of these trees can be seen in Figure 1 (attached to this letter) and photographic records are provided below.

Plate 1 – Marri Tree



Plate 2 – Western Most Jarraah Tree



Plate 3 – Central Jarrah Tree



Plate 4 – Eastern Most Jarrah Tree



We trust this satisfies the City of Rockingham as to the location of the trees referred to in the Local Structure Plan (Taylor Burrell Barnett, April 2012) and supporting documentation and that this can facilitate progression of the Local Structure Plan approval process.

Should you have questions regarding the above please contact the undersigned on 9214 6100.

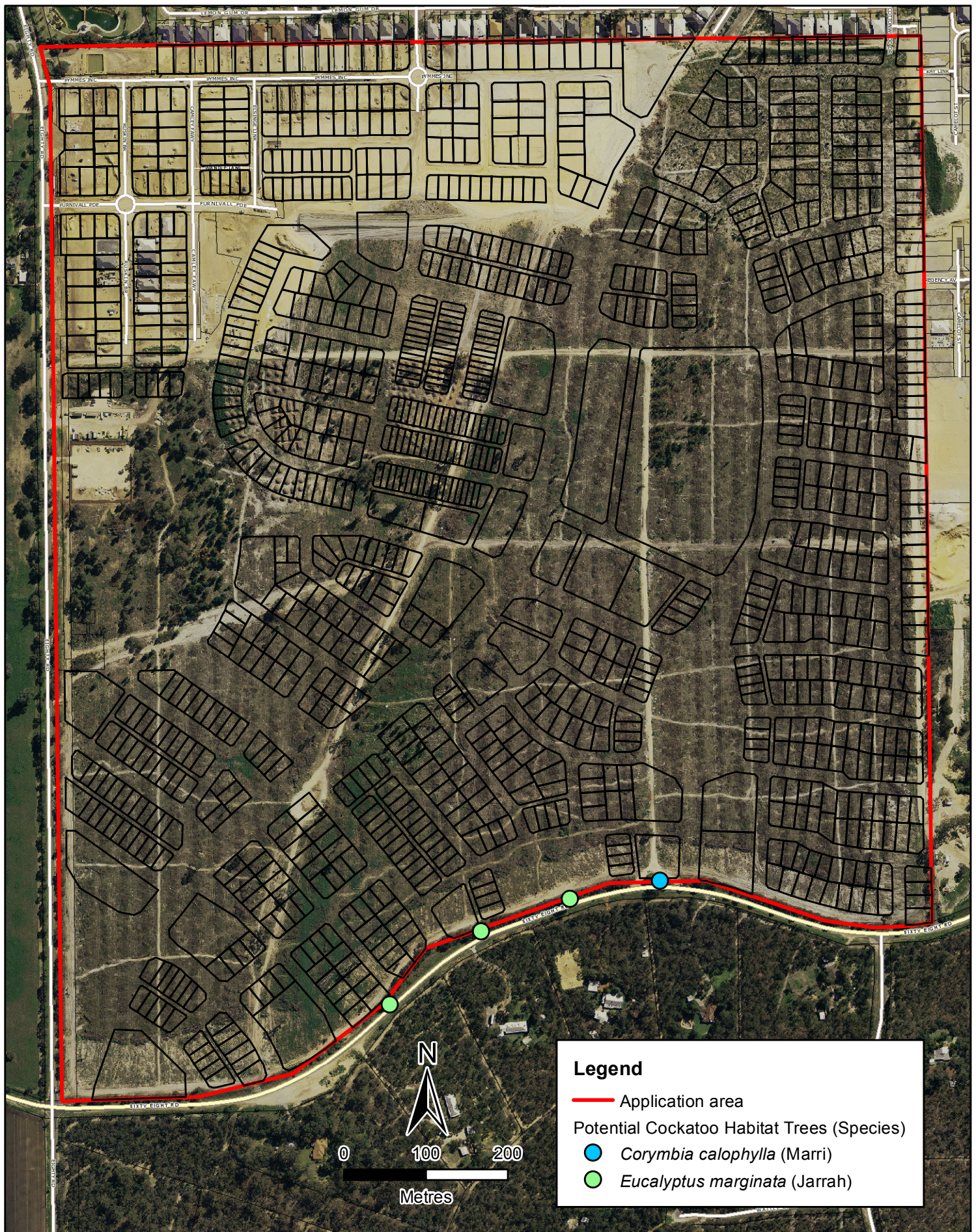
Yours sincerely
ENV Australia Pty Ltd

A handwritten signature in blue ink, reading "K. Godridge".

KAREN GODRIDGE
Senior Environmental Scientist

Figure 1 – Potential Black Cockatoo Habitat Trees recorded at Parkland Heights during 2010 Survey

FIGURE 1



CLIENT	Rockingham Park Pty Ltd		JOB NO.	J110200	
AUTHOR	R Halton	DRAWN	T Ellis	DATE	18-05-2012
SCALE	1:6,000 @ A4		PROJECTION	GDA94 MGA50	

Potential Black Cockatoo Habitat Trees

Parkland Heights 2010
Black Cockatoo Survey

FIGURE **1**