

CITY OF ROCKINGHAM
TOWN PLANNING SCHEME NO 2
STRUCTURE PLAN
ADOPTED BY THE COUNCIL AT ITS
ORDINARY MEETING HELD ON
25th May 2010
ADOPTION DATE *29/11/2010*
X RIMLOWS
APPROVED BY THE WESTERN
AUSTRALIAN PLANNING COMMISSION
ON *8th/10/2010*

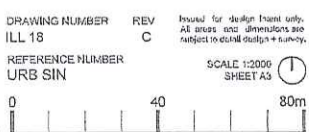
Legend

- Local Scheme Reserves
- Local Road
- Zones
- Residential
- Other
- R20 RCodes

Local Structure Plan
Lot 1002 Singleton Beach Road, Singleton
City of Rockingham

C	Addition of R15 zone	100604	SB	RD
B	Remove POS	100528	SB	RD
A	Local Structure Plan	091012	BG	RD
ISSUE DESCRIPTION		YYMMDD	DRAWN	APPROVD

DRAWING NUMBER	REV	Issued for design intent only. All areas and dimensions are subject to detailed design & survey.
ILL 18	C	
REFERENCE NUMBER	SCALE 1:2000	SHEET 3
URB SIN	0	40
	0	80m



robertsday
perth | sydney | melbourne | dubai
Level 1 | 130 Royal Street East Perth
Western Australia 6004 AUSTRALIA
T: 61 8 9218 8700 | F: 61 8 9218 8701
www.robertsday.com.au