

LANDSCAPE CONCEPT POS AREA 1

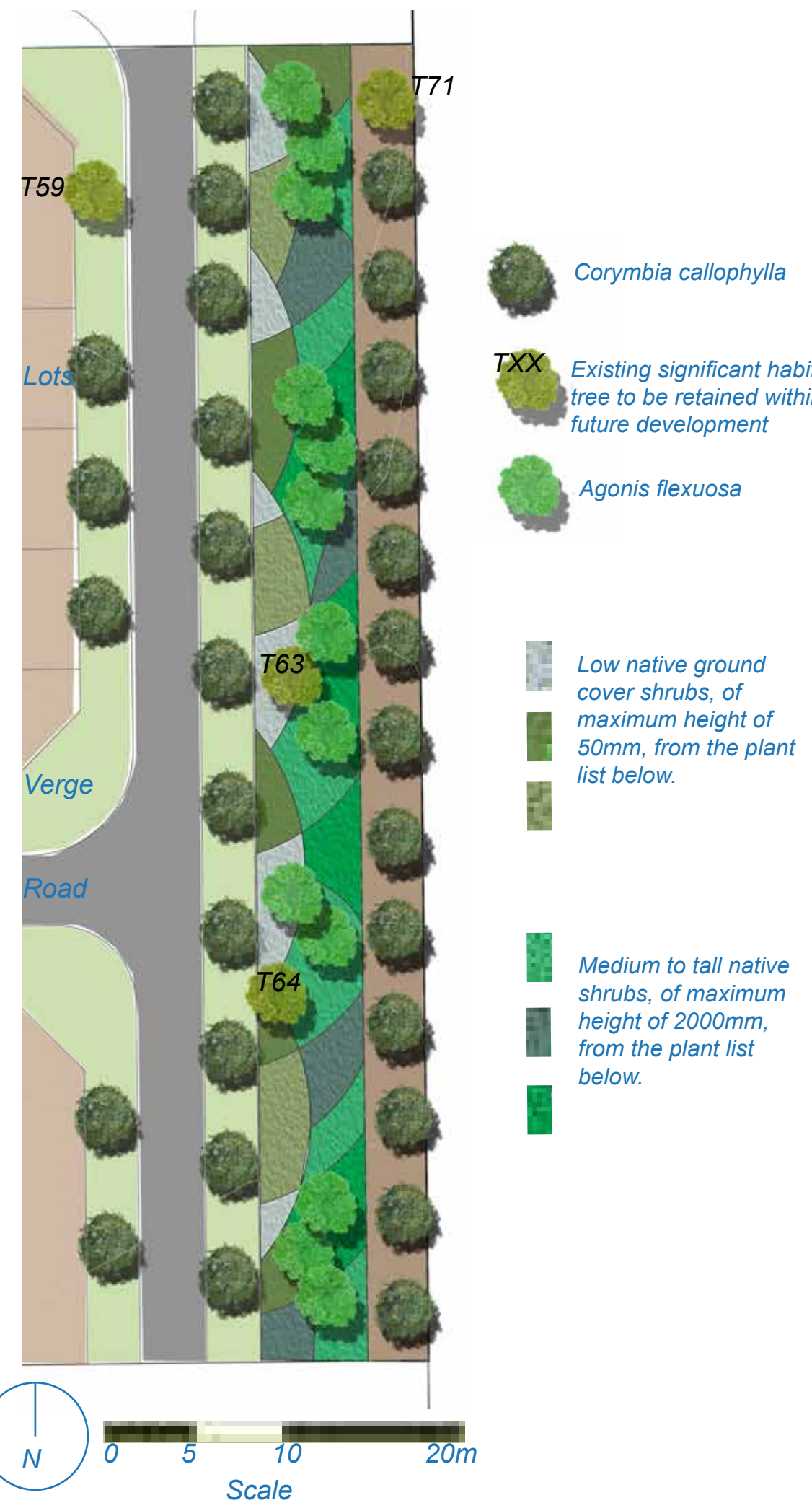


Key

- Existing trees and vegetation retained where possible and further supplemented with local and fire safe species (see list)
- Drainage basin planted with native reeds and sedges. (By others)
- Paved picnic area and seating
- Decorative concrete paving
- Stairs down to POS from pathway above
- Grassed drainage swale with max batters of 1:6
- Drainage outlet from underground storage tanks
- Limestone retaining walls, with planted garden
- Parallel parking car bays (7)
- Disabled access parking bay
- Underground storage tanks

- TXX Existing significant habitat tree to be retained within future development
- Corymbia calophylla
- Agonis flexuosa
- Melaleuca raphiophylla

LANDSCAPE CONCEPT POS AREA 2



Plant list

Trees

- Agonis flexuosa
Allocasuarina fraseriana
Banksia menziesii
Brachychiton populensis
Brachychiton X rosea
Corymbia calophylla
Eucalyptus decipiens
Eucalyptus marginata
Eucalyptus rudis
Eucalyptus spathulata
Eucalyptus tottiana
Melaleuca raphiophylla

Shrubs and groundcovers

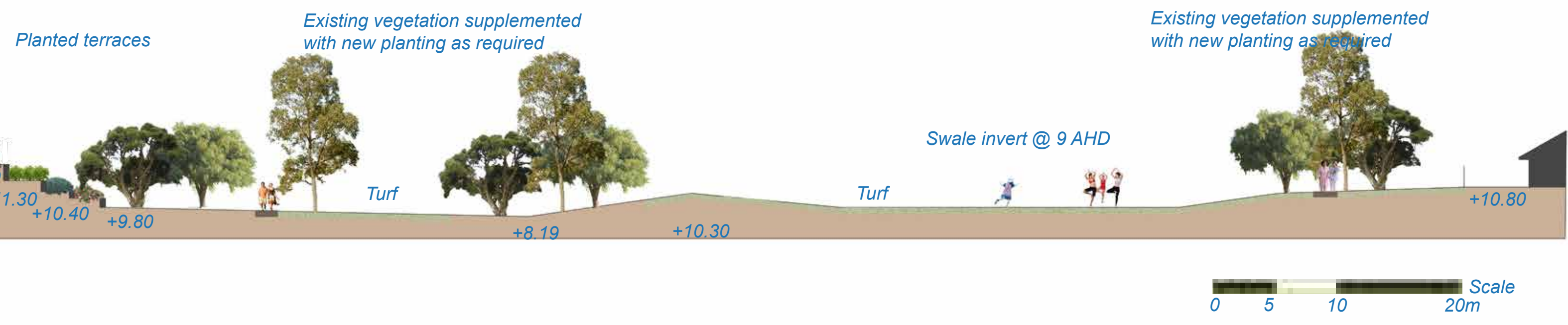
- Anigozanthos manglesii
Atriplex cinerea
Banksia blechnifolia
Bossiaea ornata
Callitris preisii
Calothamnus villosus
Carobrotus virescens
Conostylis candicans
Correa alba
Correa pulchella
Corymbia maculata
Damperia linearis
Dianella revoluta
Dichondra repens
Eremaea pauciflora
Eremophila glabra
Festuca glauca
Ficinia nodosa
- Gastrolobium capitatum
Gompholobium scabrum
Grevillea crithmifolia
Hardenbergia comptoniana
Hardenbergia comptoniana
Hemiandra pungens
Hypocalymma robustum
Kennedia prostrata
Kennedia prostrata
Leucophyta brownii
Melaleuca lanceolata
Melaleuca lateritia
Melaleuca seriata
Melaleuca trichophylla
Myoporum parvifolium
Olearia axillaris
Pericalymma ellipticum

- Philotheca spicata
Pimelea ferruginea
Scaevola alba
Scaevola crassifolia
Templetonia retusa
Verticordia acerosa
Verticordia plumosa
Zygophyllum billardieri

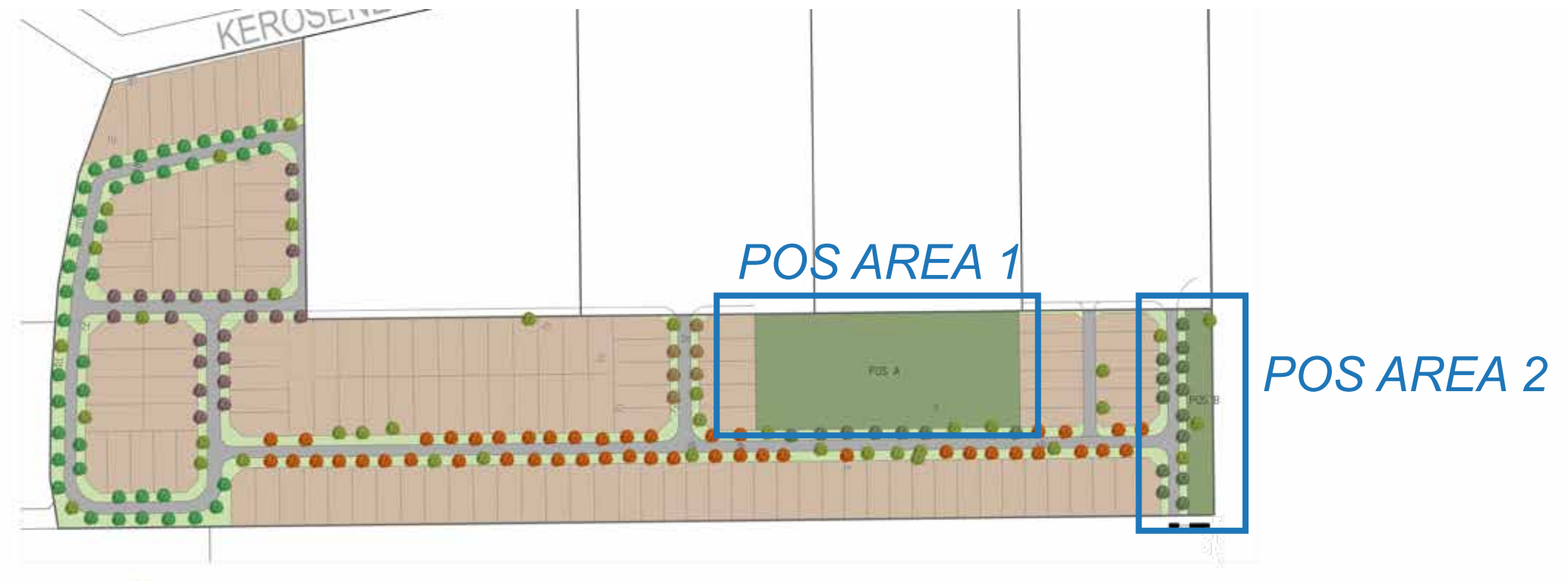
Notes

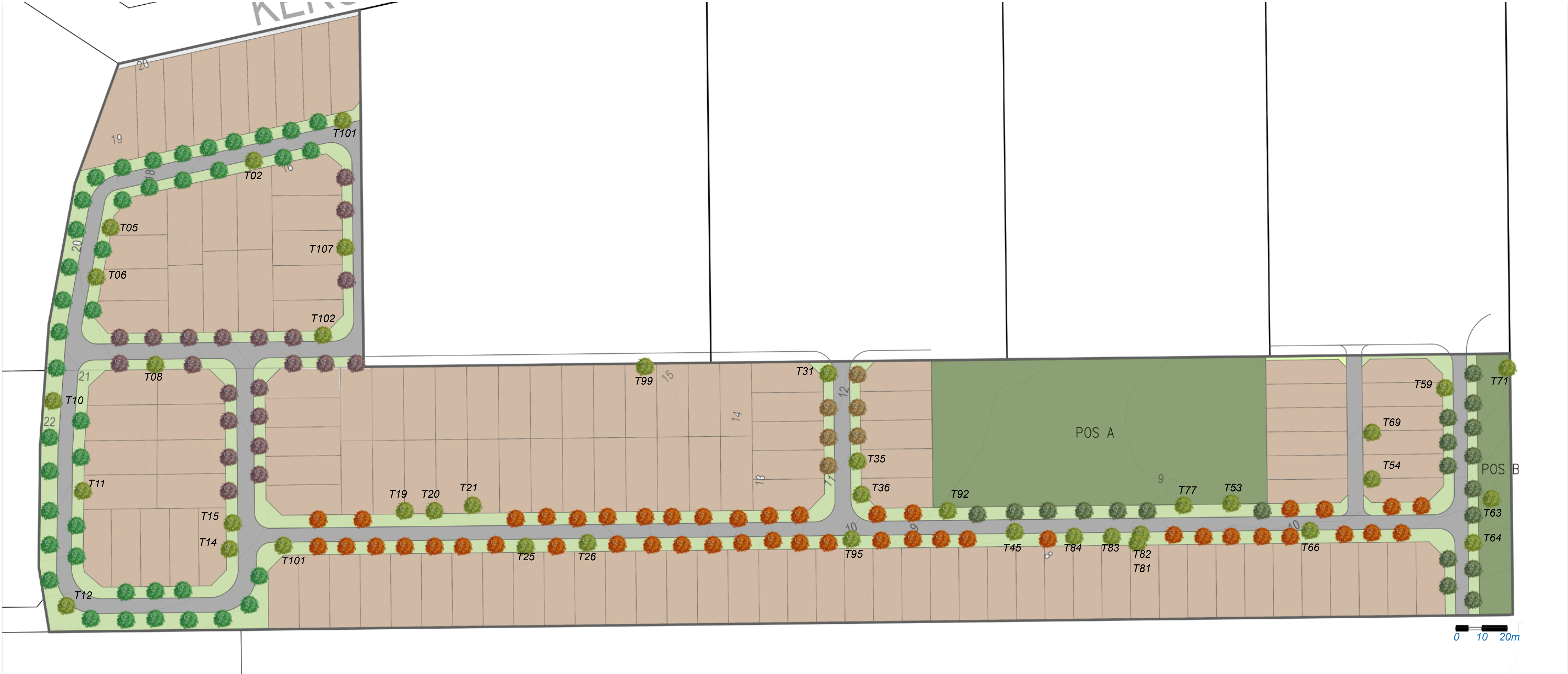
- Final plant selections for POS areas and street trees to be done in accordance with the City of Rockingham's preferred species list.
- Garden beds and turf areas prepared to the City of Rockingham's specification.
- Park furniture and concrete paving installed to the City of Rockingham's specification.
- Low fuel load plantings in accordance with Bush fire management Plan
- All garden and turf areas to be irrigated by bore.

Section A-A



Location Plan





Key

TXX Existing significant habitat tree to be retained within future verge development

Eucalyptus sideroxylon

Agonis flexuosa

Callistemon "Kings Park Special "

Eucalyptus Leucoxylon "rosea"

Corymbia ficifolia

- Notes**
- Final plant selections for POS areas and street trees to be done in accordance with the City of Rockingham's preferred species list.
 - Garden beds and turf areas prepared to the City of Rockingham's specification.
 - Existing significant trees retained where possible.
 - Low fuel load plantings in accordance with Bush fire management Plan