

LOCAL DEVELOPMENT PLAN No.2

General

Unless provided for below, the provisions of the City of Rockingham Local Planning Scheme No. 2, The Edge Structure Plan and the Residential Design Codes Volume 1 (R-Codes) apply.

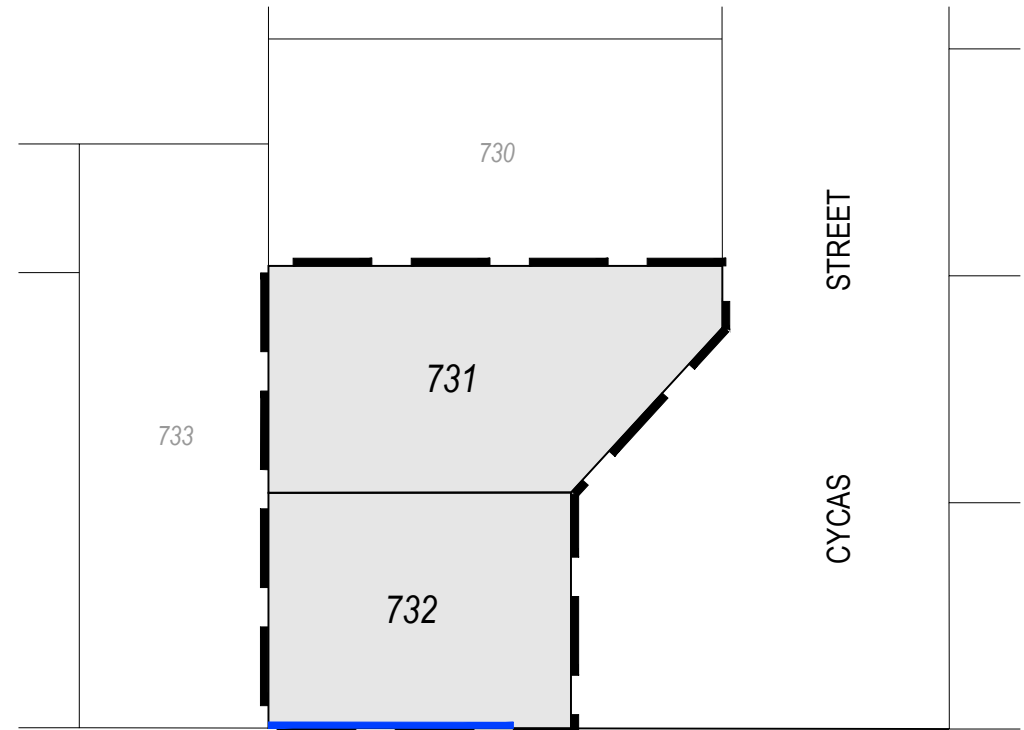
This LDP operates in conjunction with the requirements of the R-Codes by applying additional controls or by varying 'Deemed-to-comply' requirements. Where this LDP varies the requirements of the R-Codes, compliance shall be deemed to constitute 'Deemed-to-comply' and neighbour consultation with respect to those items is not required.

Street Setbacks

1. Buildings are to be setback a minimum of 2m from the primary street. A porch / veranda may be setback a minimum of 1m, with no maximum length.

Garage Setbacks

2. Garages are to be setback a minimum of 4.5m from the primary street.



Baldivis Vet



THIS LDP HAS BEEN APPROVED BY THE CITY UNDER SCHEDULE 2, CLAUSE 52 (1)(A) OF THE PLANNING AND DEVELOPMENT (LOCAL PLANNING SCHEMES) REGULATIONS 2015.


MANAGER, STATUTORY PLANNING

18/04/2023

DATE

LEGEND

 LDP Boundary

 R25

 Solid Fencing (1.8m)