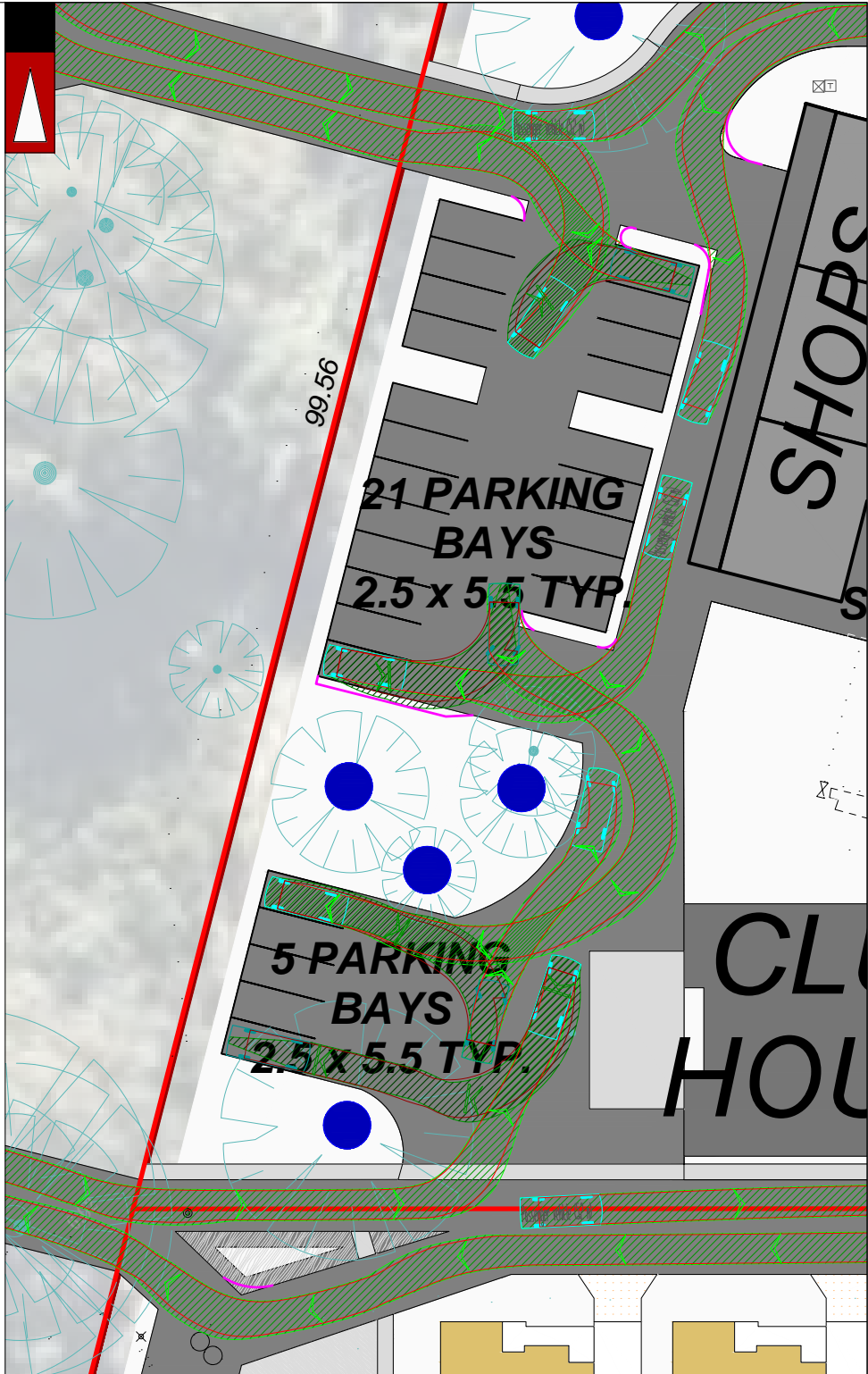
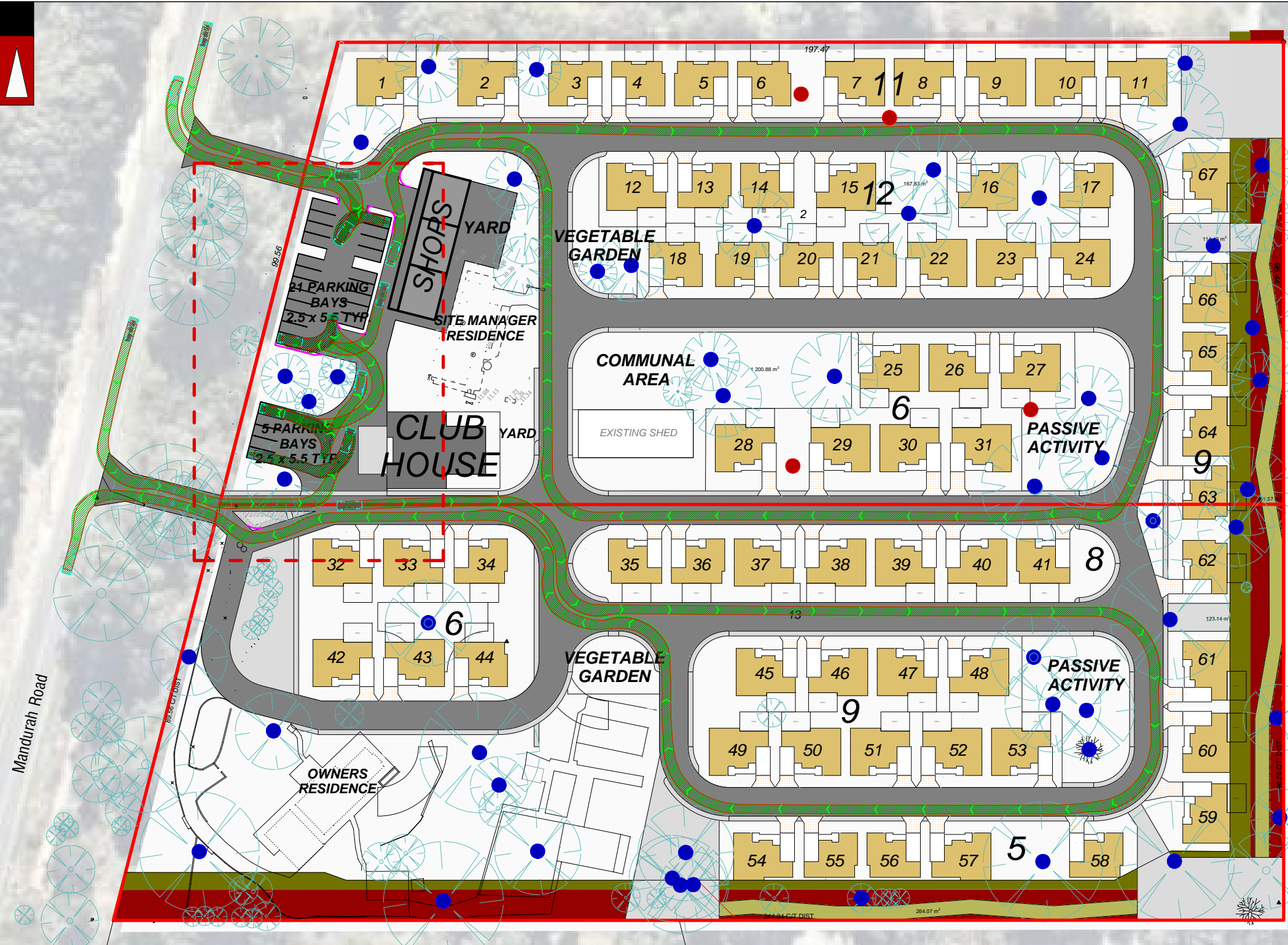


# **Appendix 3**

## **Vehicle Turning Circle Plan**



Passenger vehicle (5.2 m)  
Overall Length 5.200m  
Overall Width 1.940m  
Overall Body Height 1.804m  
Min Body Ground Clearance 0.295m  
Track Width 1.840m  
Lock to Lock Time 4.00s  
Kerb to Kerb Turning Radius 6.300m

Lot boundary

Wheel Path (Forward Vehicle Motion)

Vehicle Chasis Envelope (Forward Vehicle Motion)

Wheel Path (Reverse Vehicle Motion)

Vehicle Chasis Envelope (Reverse Vehicle Motion)

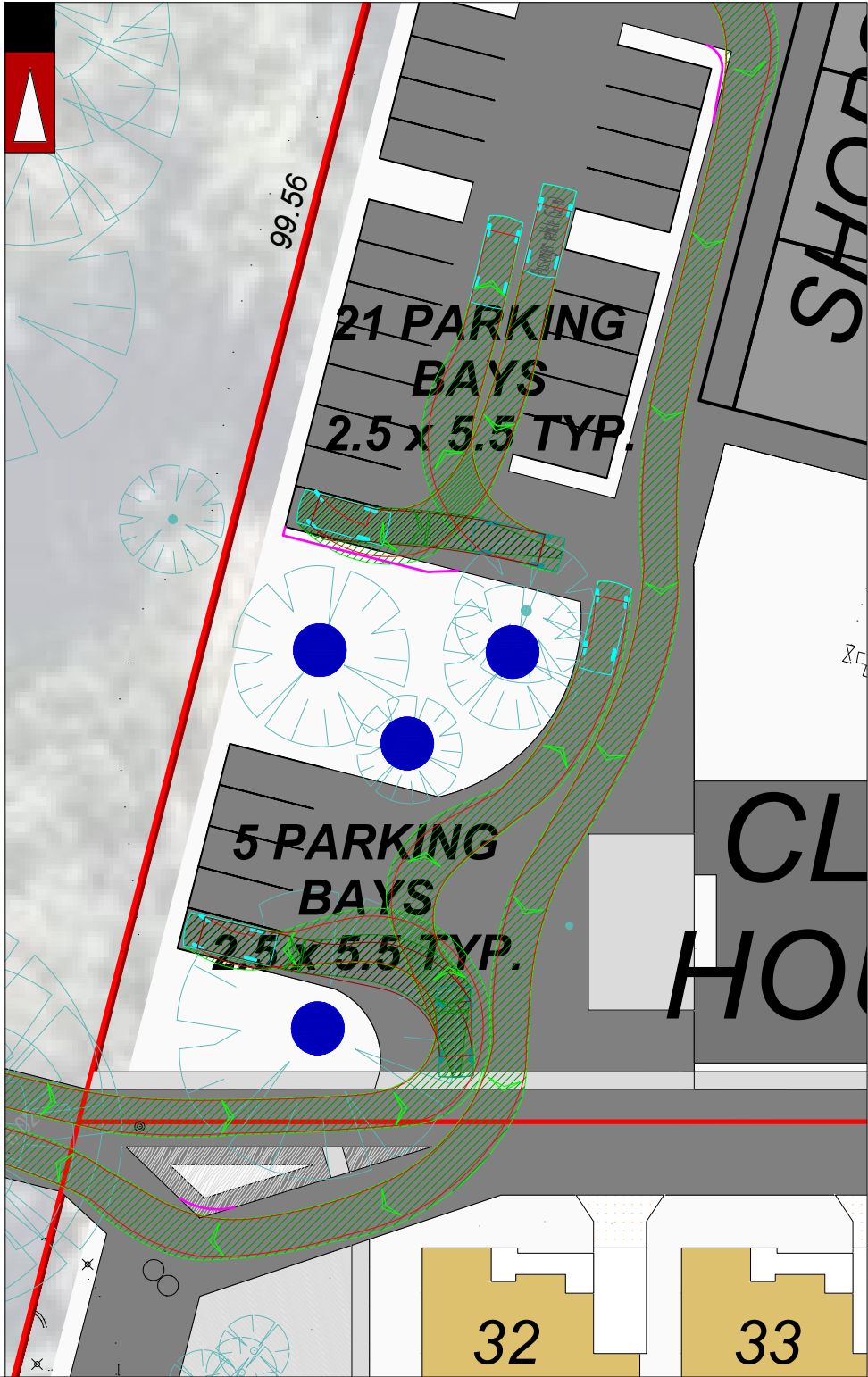
Recommended Kerb modification

**LEGEND**

Certified System  
Quality ISO 9001  
SAI GLOBAL

			PROJECT: 1447-1457 Mandurah Road, Baldivis	DRAWN BY:  J.S.	<div>Civil &amp; Traffic Engineering Consultants Suite 7 No 10 Whipple Street Balcatta WA 6021</div> <div>PH: 08 9441 2700 WEB: www.kctt.com.au</div> <div>kctt</div>
			TITLE: Vehicle Turning Circle Plan - Passenger Vehicle (5.2m)		
A	03-09-2018	ISSUED FOR REVIEW	DRAWING NUMBER: KC00894.000_S20		
NO	DATE	AMENDMENT			





Passenger vehicle (5.2 m)  
Overall Length 5.200m  
Overall Width 1.940m  
Overall Body Height 1.804m  
Min Body Ground Clearance 0.295m  
Track Width 1.840m  
Lock to Lock Time 4.00s  
Kerb to Kerb Turning Radius 6.300m

Lot boundary

Wheel Path (Forward Vehicle Motion)

Vehicle Chasis Envelope (Forward Vehicle Motion)

Wheel Path (Reverse Vehicle Motion)

Vehicle Chasis Envelope (Reverse Vehicle Motion)

Recommended Kerb modification

**LEGEND**

Certified System  
Quality ISO 9001  
SAI GLOBAL

			PROJECT: 1447-1457 Mandurah Road, Baldivis	DRAWN BY:  J.S.	<div>Civil &amp; Traffic Engineering Consultants Suite 7 No 10 Whipple Street Balcatta WA 6021</div> <div>PH: 08 9441 2700 WEB: www.kctt.com.au</div> <div>kctt</div>
			TITLE: Vehicle Turning Circle Plan - Passenger Vehicle (5.2m)		
A	03-09-2018	ISSUED FOR REVIEW	DRAWING NUMBER: KC00894.000_S21		
NO	DATE	AMENDMENT			





Service Vehicle (8.8 m)	
Overall Length	8.800m
Overall Width	2.500m
Overall Body Height	4.300m
Min Body Ground Clearance	0.427m
Track Width	2.500m
Lock to Lock Time	4.00s
Kerb to Kerb Turning Radius	12.500m

Lot boundary	---
Wheel Path (Forward Vehicle Motion)	---
Vehicle Chasis Envelope (Forward Vehicle Motion)	---
Wheel Path (Reverse Vehicle Motion)	---
Vehicle Chasis Envelope (Reverse Vehicle Motion)	---

Recommended Kerb modification

LEGEND

Certified System  
Quality ISO 9001  
SAI GLOBAL

			PROJECT: 1447-1457 Mandurah Road, Baldivis	DRAWN BY:  J.S.	<div>Civil &amp; Traffic Engineering Consultants Suite 7 No 10 Whipple Street Balcatta WA 6021</div> <div>PH: 08 9441 2700 WEB: www.kctt.com.au</div> <div>kctt</div>
			TITLE: Vehicle Turning Circle Plan - Service Vehicle (8.8m)		
A	03-09-2018	ISSUED FOR REVIEW	DRAWING NUMBER: KC00894.000_S22		
NO	DATE	AMENDMENT			