

Stepping Out in Rockingham

Don Shepherd Nature Reserve & Nyoongar Trail



Don Shepherd Nature Reserve Trail

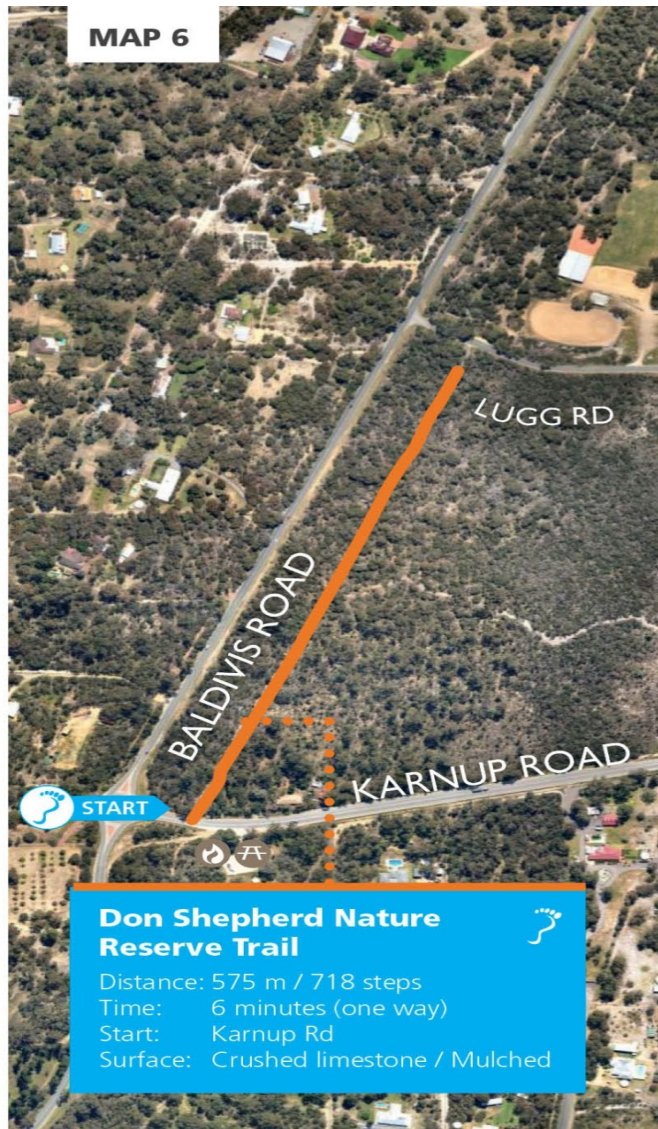
Distance: 575 m / 718 steps
Time: 6 minutes (one way)
Start: Karnup Rd
Surface: Crushed limestone / Mulched

The Don Shepherd Nature Reserve Trail is situated on the old Karnup townsite. Access is via Baldivis Road turning into Karnup Road. You can find parking with picnic facilities off Karnup Road. The entrance is opposite to these facilities, take care when crossing north over Karnup Road. Enter the Don Shepherd Nature Reserve Trail, walking along the crushed limestone/mulched path to as far as Lugg Road, approximately 575 metres. Jarrah, Banksia species and Marri with an undergrowth of flowering shrubs, orchids and other wildflowers (*Anigozathos manglesii*; *Burchardia congesta*; *Calectasia narragara*) represents a type of bushland of the sandy coastal plain. The old Karnup townsite that was situated here was settled through the 1920's soldiers and group settlement scheme.

The Nyoongar Trail is accessible via Baldivis Road turning into Karnup Road. You can find parking with picnic facilities off Karnup Road. This trail is the only trail named after the Nyoongar people in Western Australia. It represents the importance of the land to its people. There are six cultural interpretive signs with artwork depicting each of the six seasons and outlining the use the Nyoongar people had for their land. These signs reflect the traditions and food sources linked to the particular weather patterns.

Don't forget to clean your shoes with the brushes provided for the control of dieback.





**The word Nyungar is identified as a single language but can be pronounced several ways. This document uses the spelling "Nyungar" to represent the different spellings including Noongar, Nyoongar, Nyoongah, Nyungah, Nyugah, Yungar and Noongah.*